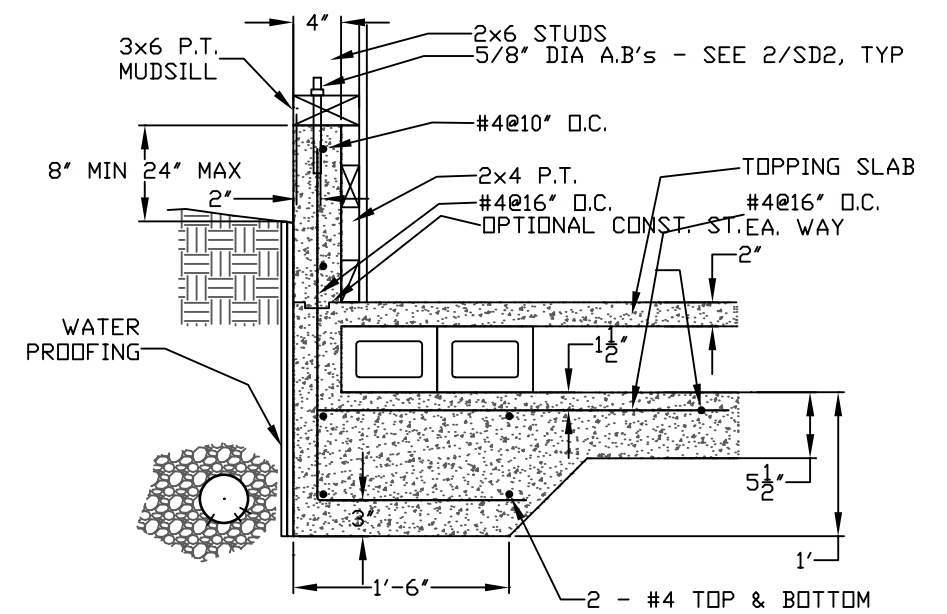
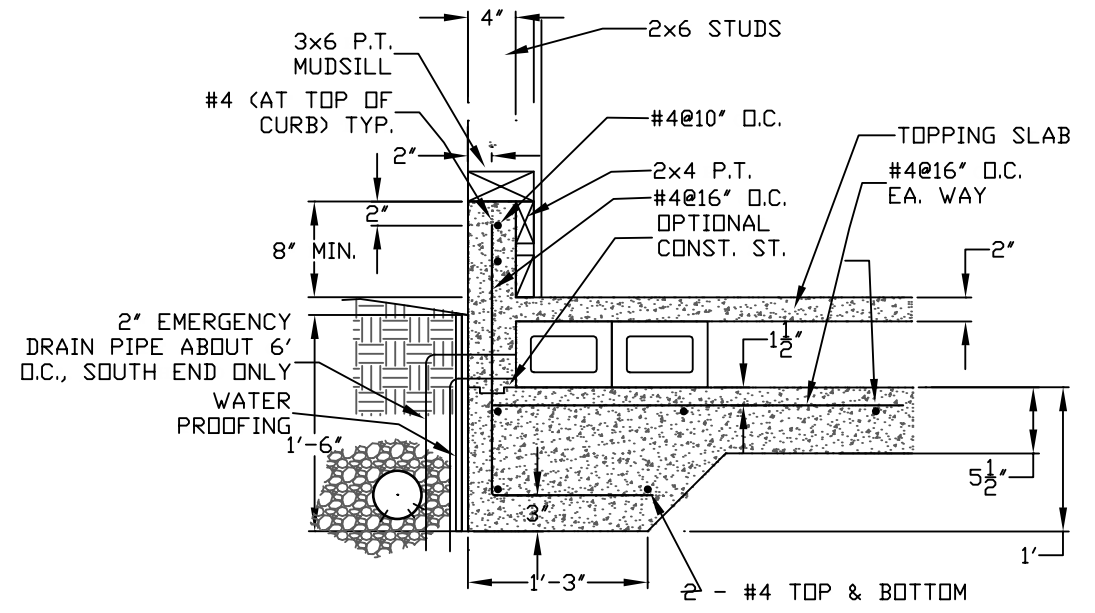


FOUNDATION PLAN

NOTE: SEE SHEAR WALL PLAN - LEVEL 1 FOR HOLDDOWN LOCATIONS, SEE 3/SD3 FOR HOLDDOWN A.B.'S, SEE 2/SD2 FOR MUDSILL A.B. SPACING. SEE DETAIL 1/D1 FOR ARRANGEMENT OF BETWEEN-SLAB CONCRETE BLOCKS AND FOR THROUGH-SLAB PENETRATIONS.

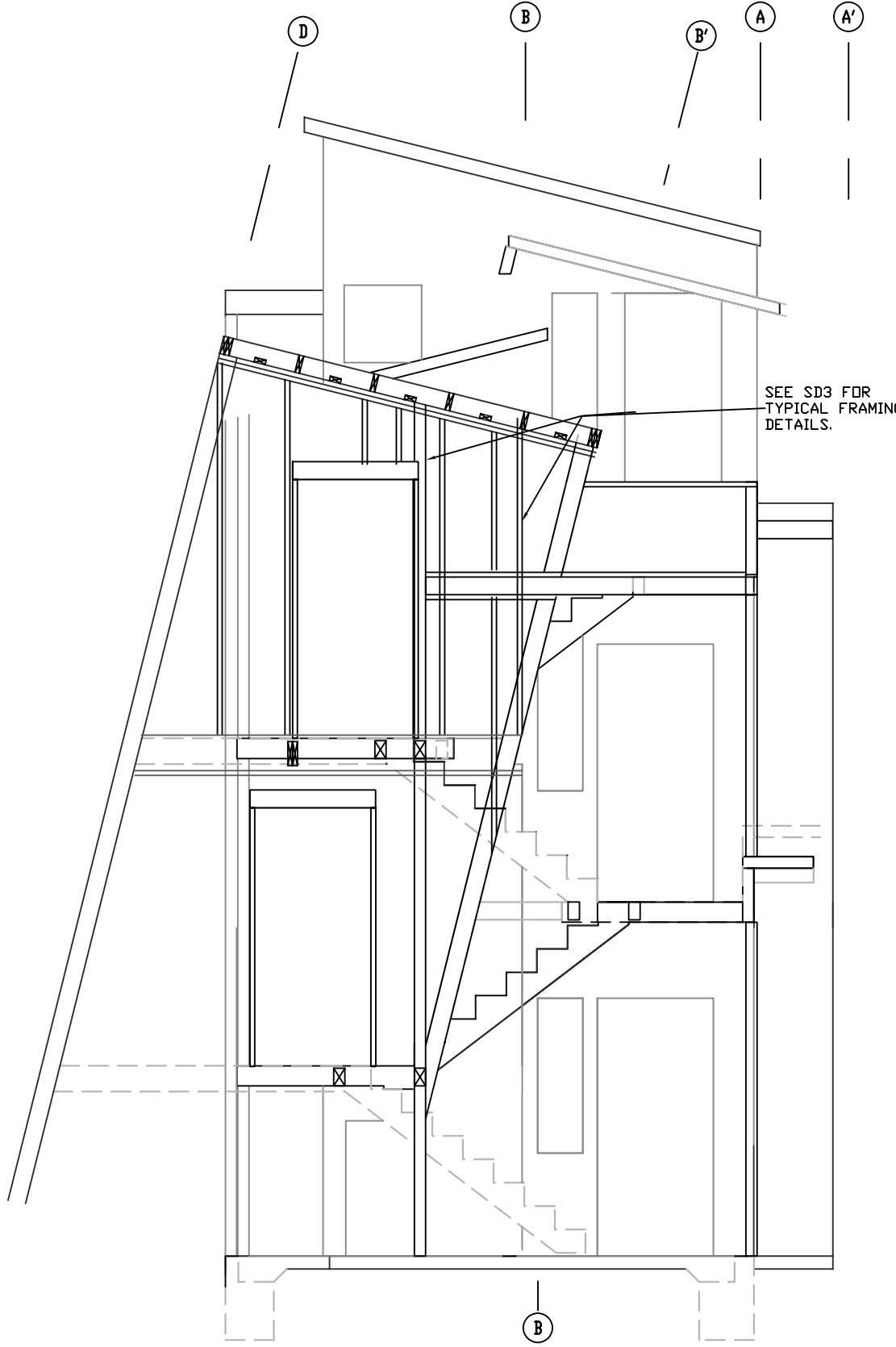
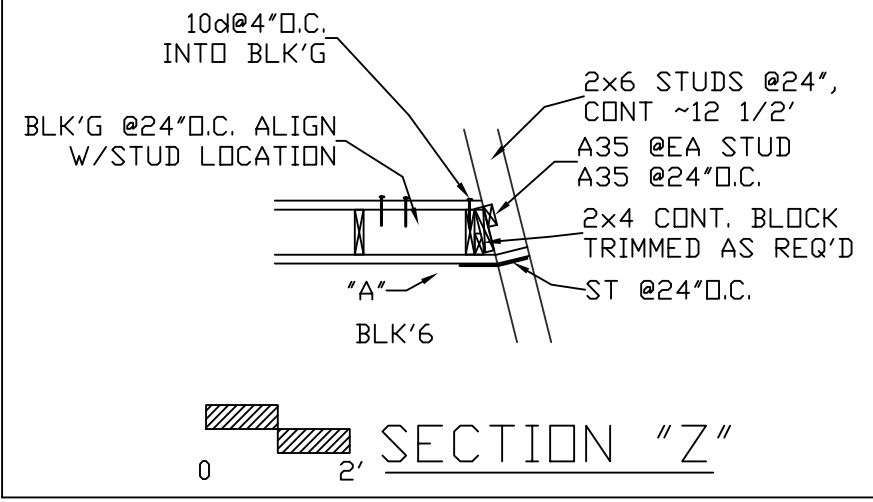


FOOTER SECTION, 2' RETAINING (X)

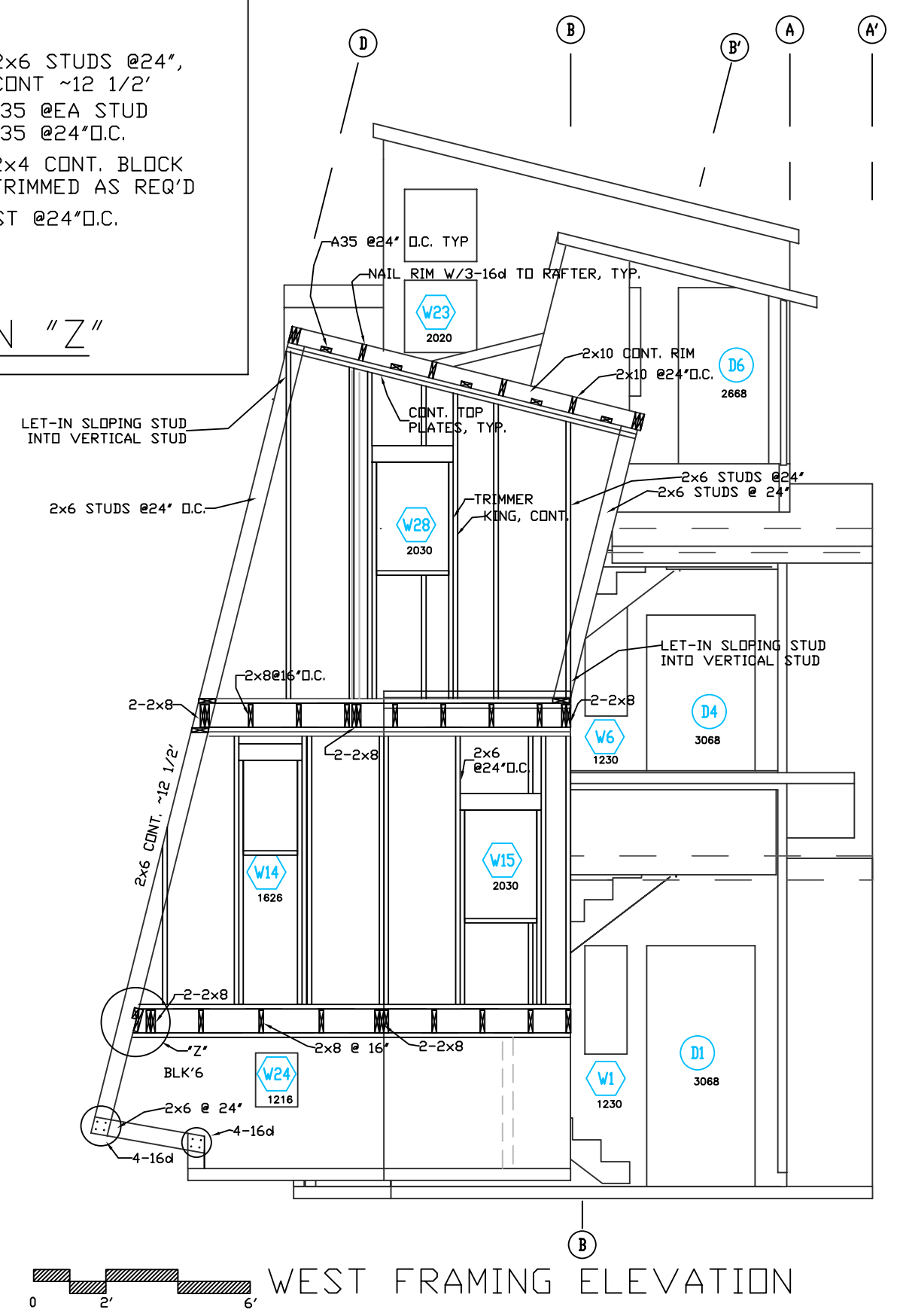


FOOTER SECTION, NOT RETAINING (Y)

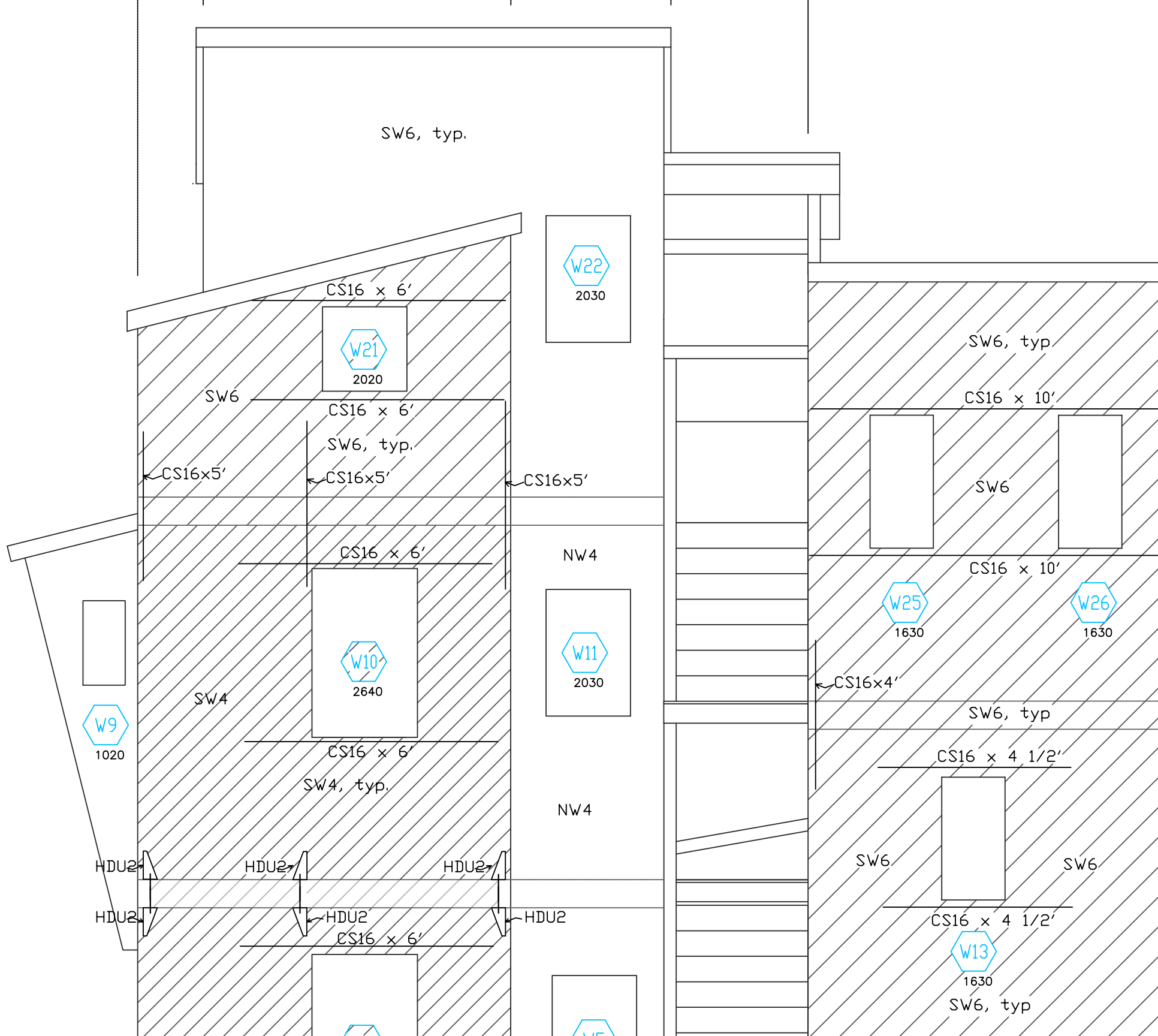
FOUNDATION PLAN
 PROJ Leaning Tower Bath, Wicinas/Nishizawa
 DATE 5/5/09 REV 8/2/2009 DWG BY: B. WICINAS
 FOR 51101 Nash Mill Rd, Philo 95466
 bwicinas@pacbell.net 510 848-1797

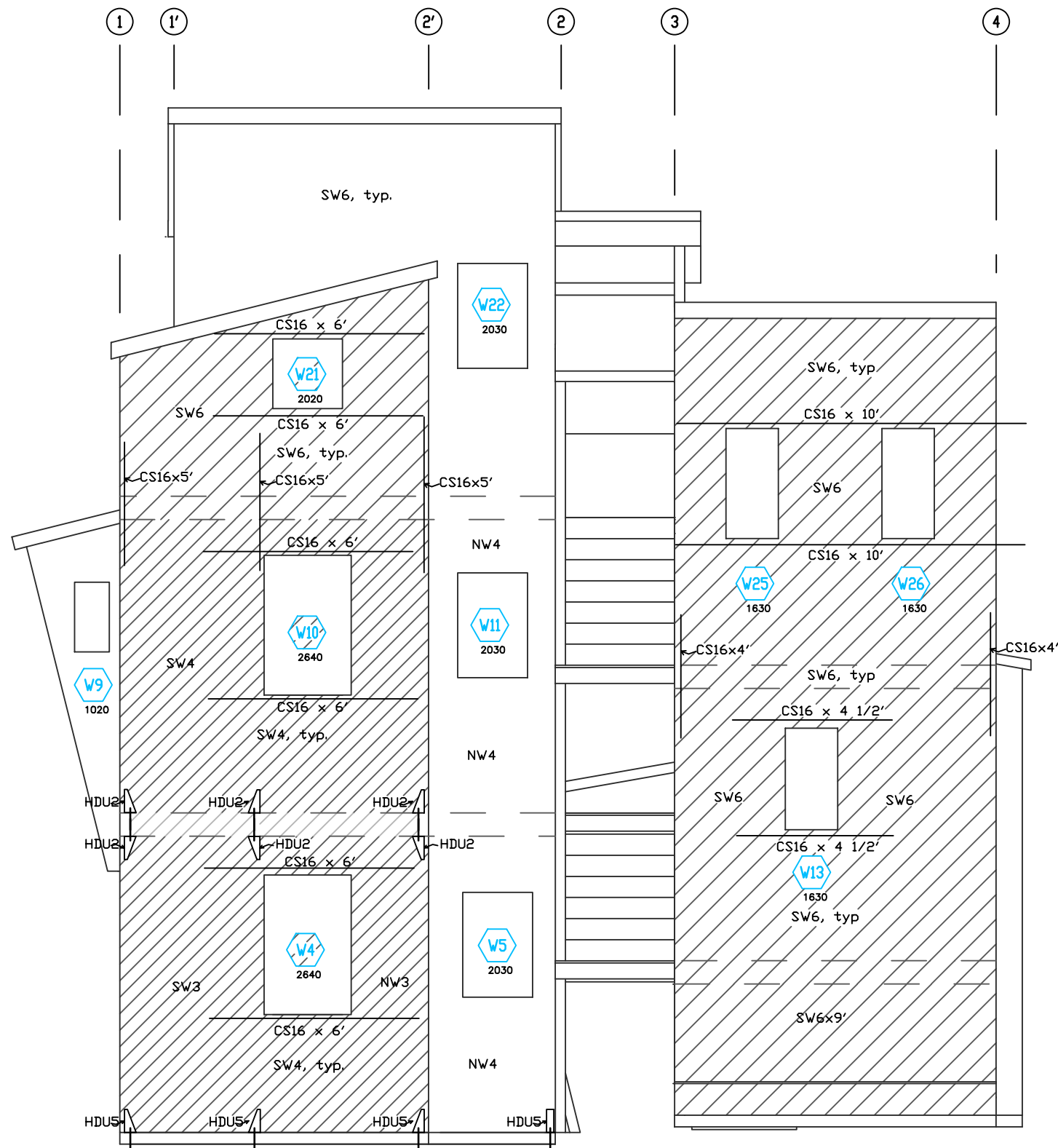


FRAMING SECTION AT ③

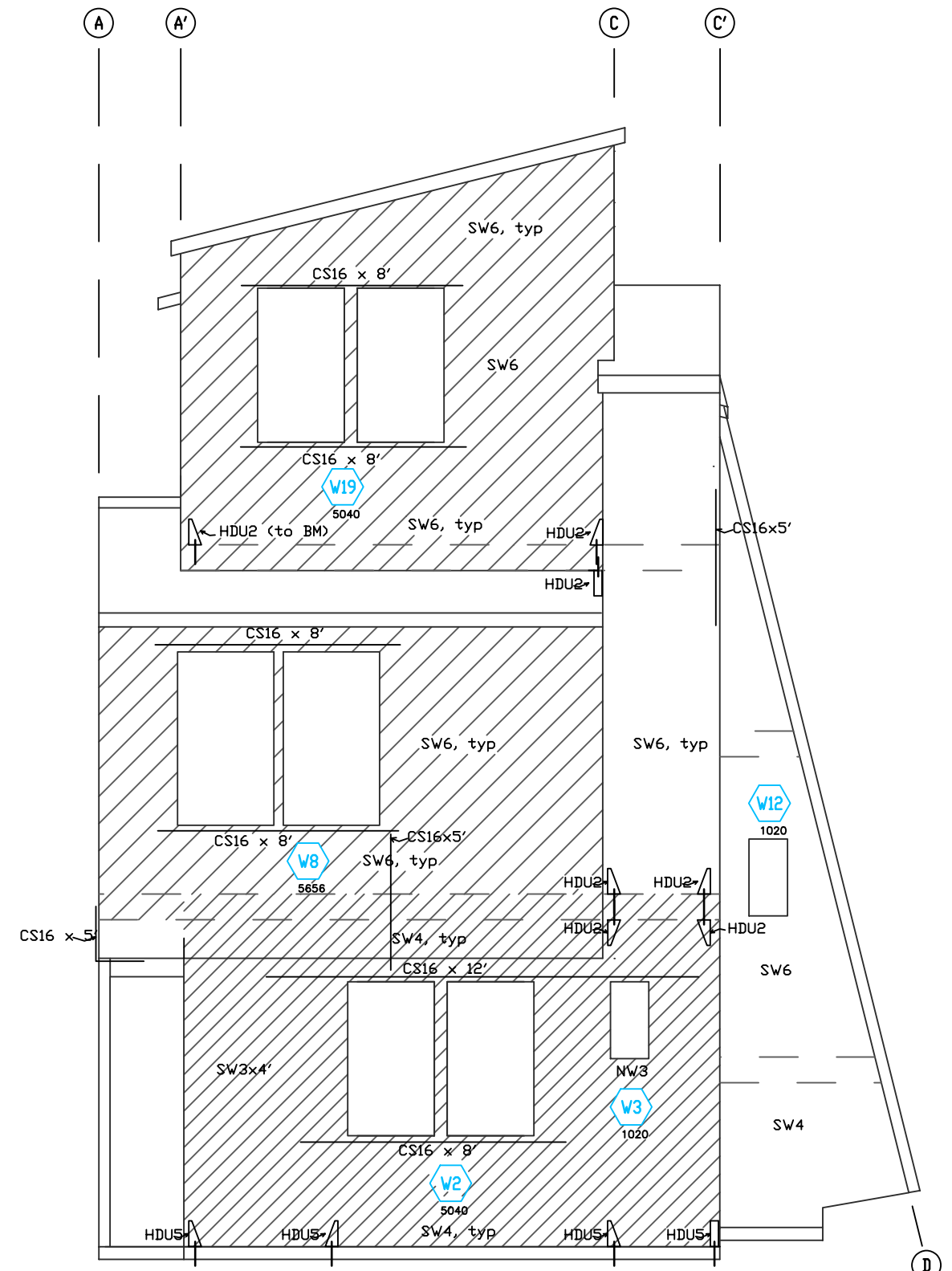


WEST FRAMING ELEVATION
 PROJ Leaning Tower Bath, Wicinas/Nishizawa
 DATE 4/3/09 REV 8/2/2009 DWG BY: B. WICINAS
 FOR 51101 Nash Mill Rd, Philo 95466
 bwicinas@packell.net 510 848-1797





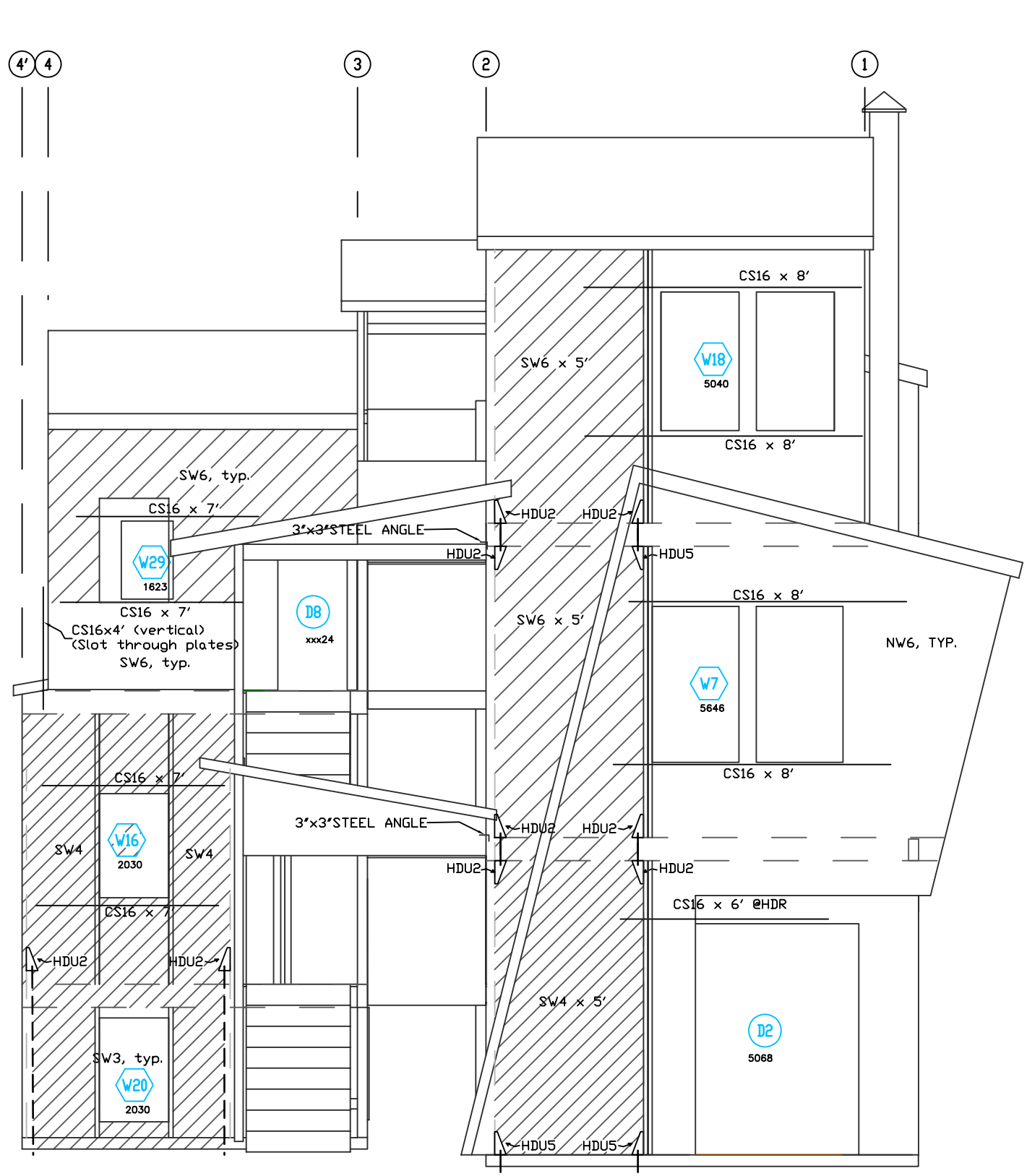
0 2' 6' NORTH ENGR ELEV



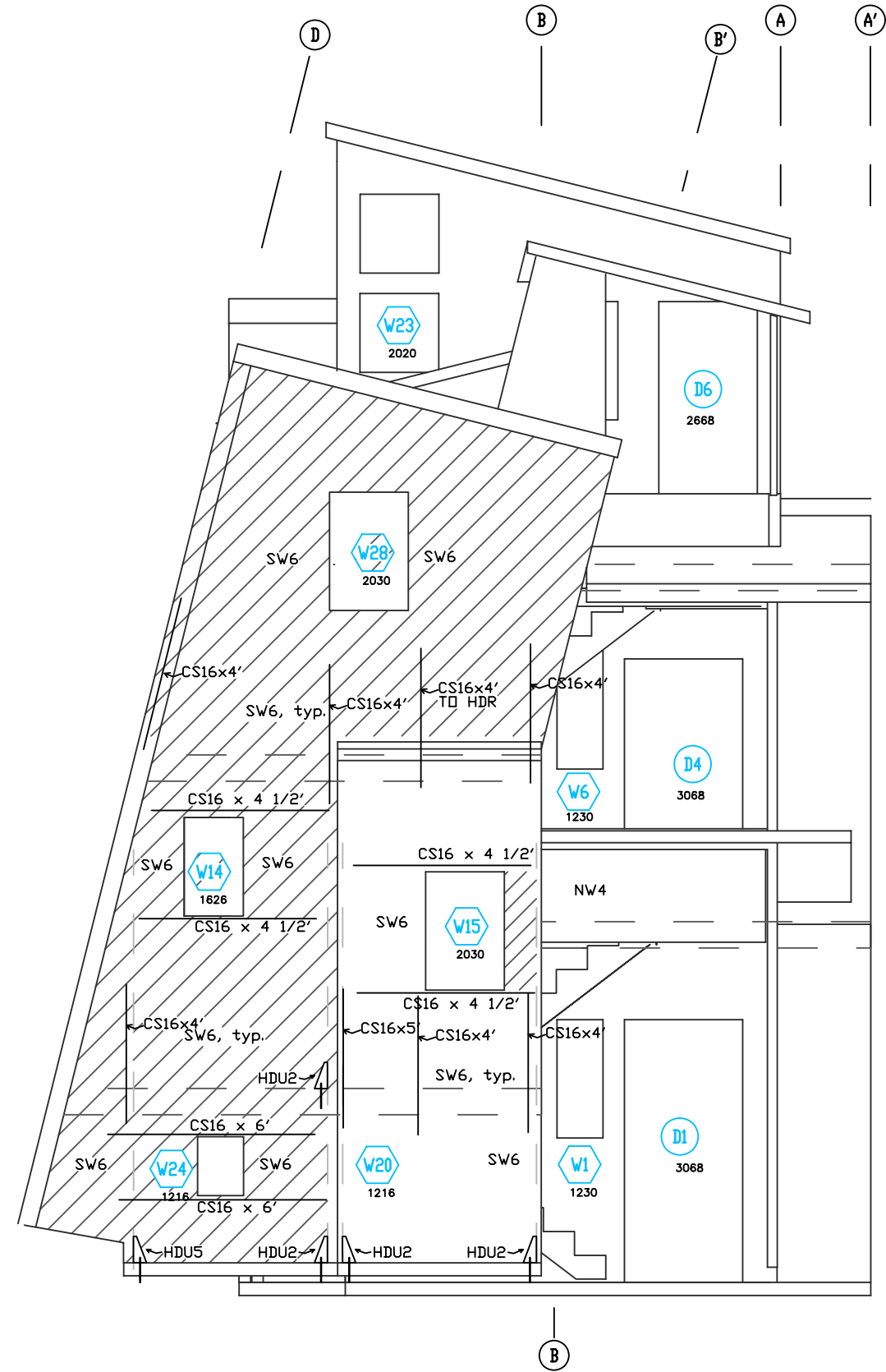
0 2' 6' EAST ENGR ELEV

Engineering Elev East, North
 PROJ Leaning Tower Bath, Wicinas/Nishizawa
 DATE 4/3/09 REV 8/2/2009 DWG BY: B. WICINAS
 FOR 51101 Nash Mill Rd, Philo 95466
 bwicinas@packbell.net 510 848-1797

E9



ENGR SOUTH ELEVATION



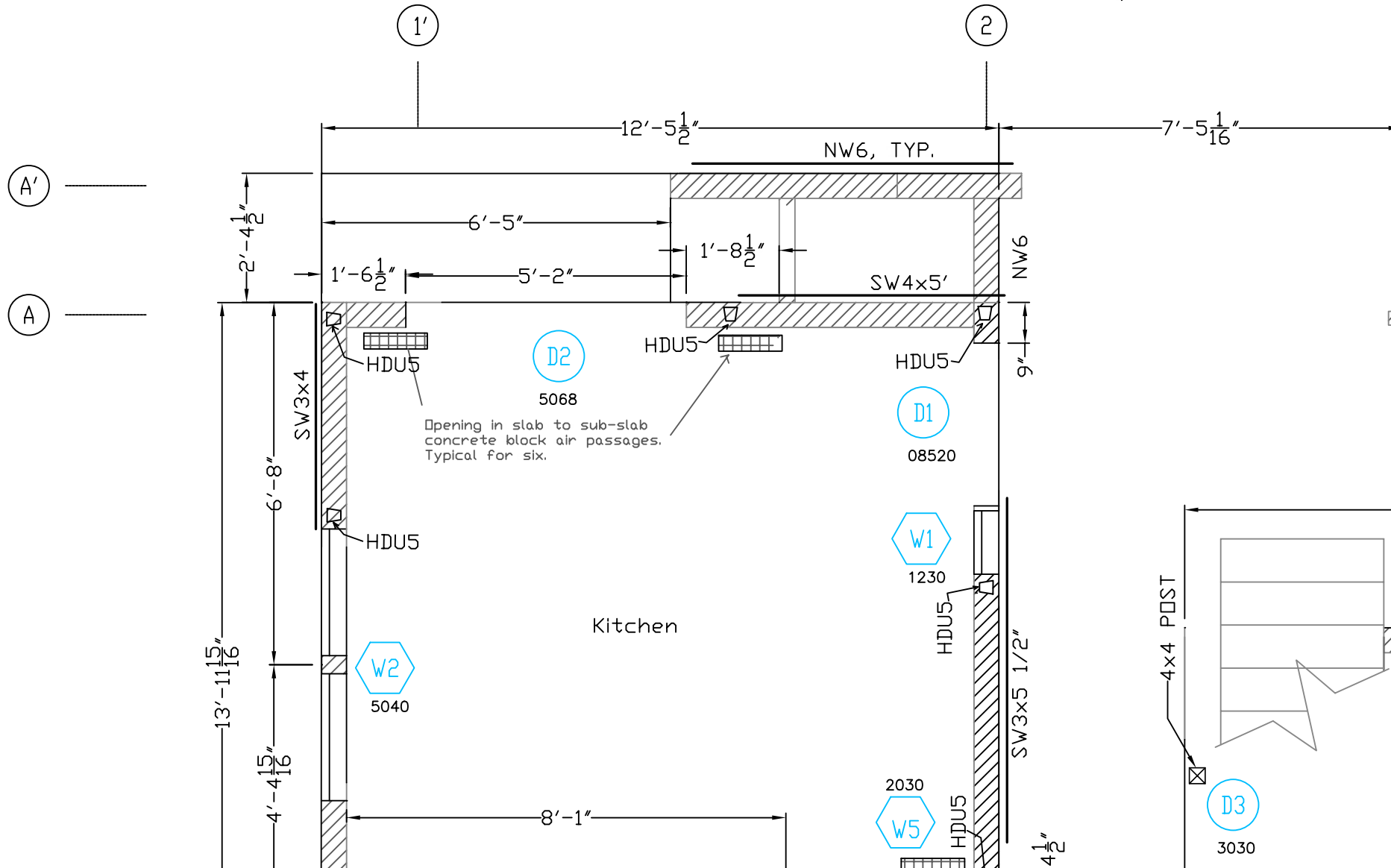
ENGR WEST ELEVATION

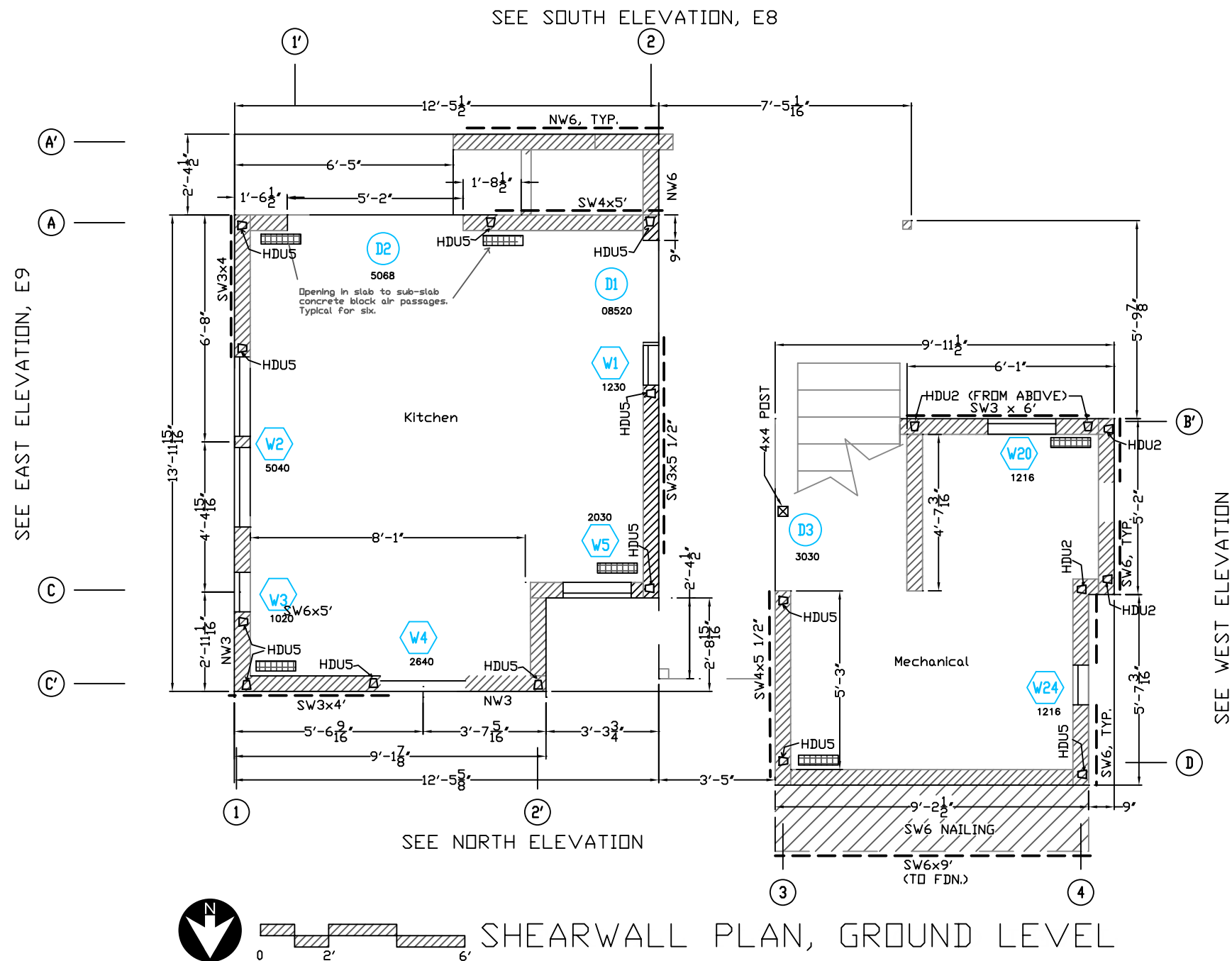
ENGR ELEV SOUTH, WEST
 PROJ Leaning Tower Bath, Wicinas/Nishizawa
 DATE 4/3/09 REV 8/2/2009 DWG BY: B. WICINAS
 FOR 51101 Nash Mill Rd, Philo 95466
 bwicinas@packell.net 510 848-1797

E8

SEE EAST ELEVATION, E9

SEE SOUTH ELEVATION, E8

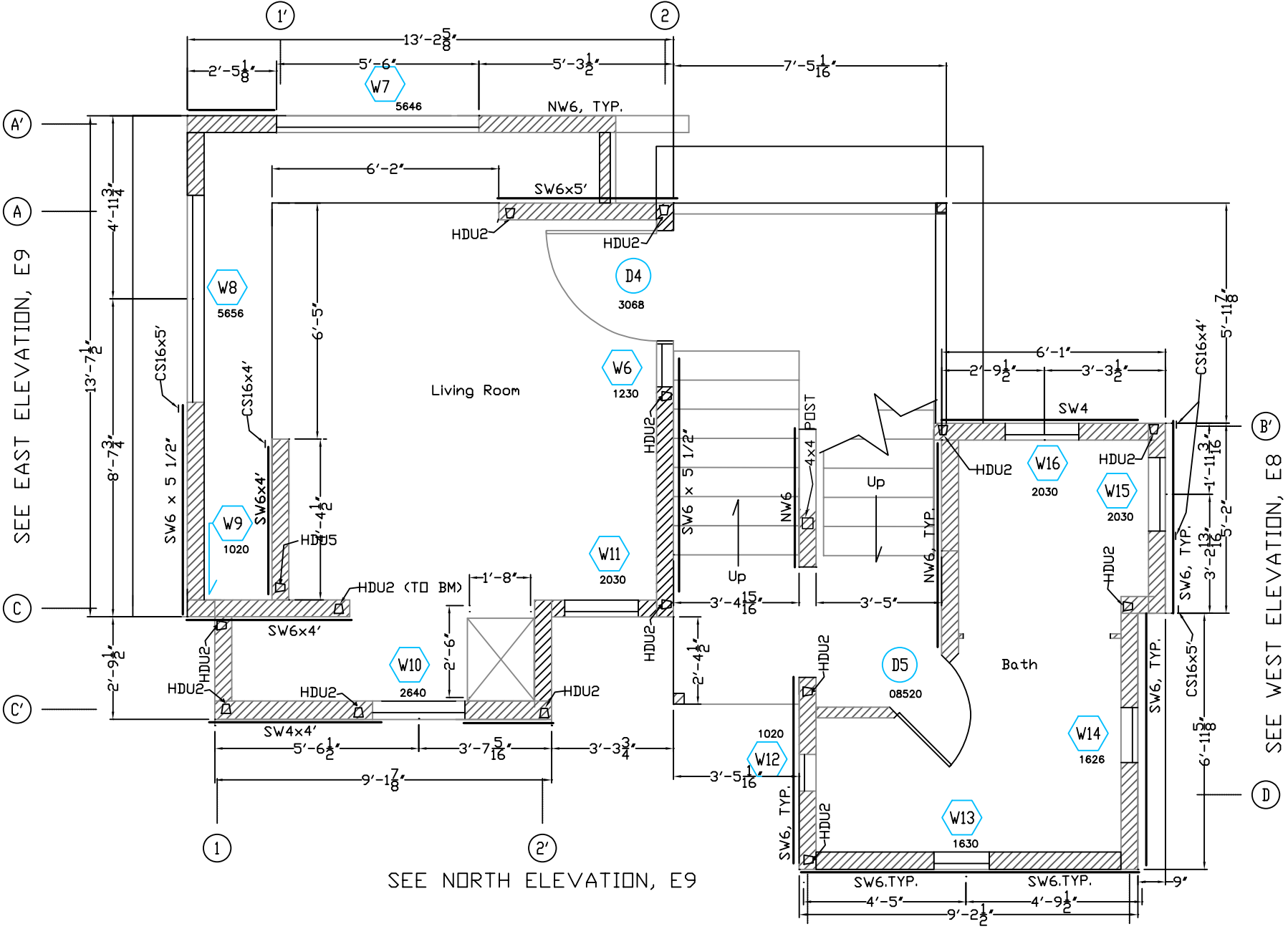




SHEARWALL PLAN, GROUND LEVEL
 PROJ Leaning Tower Bath, Wicinas/Nishizawa
 DATE 4/3/09 REV 8/2/2009 DWG BY: B. WICINAS
 FOR 51101 Nash Mill Rd, Philo 95466
 bwicinas@packbell.net 510 848-1797

E5

SEE SOUTH ELEVATION, E8



SEE EAST ELEVATION, E9

SEE NORTH ELEVATION, E9

SEE WEST ELEVATION, E8

SHEARWALL PLAN LEVEL 1

